

# European Students Championship in Forestry skills

## Preparatory meeting Luxembourg,

**15. – 18. Oct. 2009**

(Including the rule changes from Norway, Germany and Luxembourg)

Representatives from Austria, Belgium, Germany, Hungary, Italy, Netherlands, Norway,  
Poland, Sweden

### **1. Review Germany 2009**

Mast felling: was new and everyone liked this discipline.

### **2. Preview Luxembourg 2010**

Information can be found at: <http://ecfs-2010.mysite.lu>

### **3. Changes**

During this preparatory meeting for the 9<sup>th</sup> **European Students Championships in Forestry Skills** (ECFS) we decided, that we will from now on the rules of the **World Association for Logging Championships (IALC)** with some changes/adoptions for our championship. You can find these rules in 8 different languages on the webpage [www.ialc.ch](http://www.ialc.ch).

You will find all explanations on <http://ecfs-2010.mysite.lu> and [www.hohenlehen.at](http://www.hohenlehen.at). Here you find the General Rules for the ECFS.

## **4. Adjustments to the “ialc-rules” for the European Students Championships in Forestry Skills**

### **4.1. Chapters I-III**

The “IALC-rules” are assumed from “I. GENERAL REQUIREMENTS” up to “III. SYSTEM TO EVALUATE PERFORMANCES”. These rules are completed with the following additions:

#### **a) General**

- To avoid misunderstandings, the country hosting the event organizes English speaking persons.
- All contestants must keep the chain cover during transportation and during movements from place to place in the competition area.
- The contestant has to wear protective shoes (EN 345/2)
- Trainer or teacher are not allowed to step into the arena – only the contestant can watch the measuring without making any comments.
- For the training of the judges, it will be possible that a B-Team of the organizing country can start at first as pre-contestant without points.

#### **b) Starting**

- In ECFS the contestant has to start the chainsaw with chain brake! Starting without chain brake is starting the saw in an incorrect way (Fig. 1) (→ 30 penalty points)
- During warming up the chainsaw, the contestant has to wear the complete protection equipment (otherwise: 20 penalty points altogether)! The referee stops him and the contestant restarts.
- Every contestant has to indicate that he is ready before starting the discipline. → to avoid misunderstandings, there should be eye-contact between judge and contestant!
- Commando: READY – STEADY – GO Fig. Nr. 1 is not applied
- If the contestant has not all protection equipments after the starting commando “Ready”, the judges stop starting. The contestant gets 20 penalty points, uses all protection equipments and restarts.
- The tools and the student must stand completely behind the starting line (figure 2 ialc). This rule is applied for all disciplines.

## c) **Protesting**

- The contestant has the right to protest against the arrangement of the contest and against the scoring. The protest against the of arrangement the contest has to be made before the beginning of the performance. Protests made after the performance will not be accepted.
- The protest against the scoring shall be made within a period of 30 minutes beginning at the moment of receipt of the copy of the results. This protest has to be made by the team leader.
- Protest should be written as described in the rules, but the contestant and team leader should have the possibility to explain the problem to the jury and head jury.
- The final decision is taken by the head jury.

## 4.2. **Chapter IV: CLASSING / RANKING”**

Classing if scores are equal: We will keep our old system:

**Fitting another chain:** In case of equal scores the contestant with the better time is the winner.

**Felling cut:** In case of equal scores the contestant with the better time is the winner.

**Bucking by combined cuts:** In case of equal scores the winner is the contestant whose cuts are closer to each other. If this result, too, is the same, the winner is the one with the better time.

**Precision bucking:** In case of equal scores the winner is the contestant who got the better results in accuracy of cutting. If the scores of precision bucking are even too, the best time defines the winner.

**Limbing:** In case of equal scores the contestant with the better time is the winner.

## 4.3. **Chapter V: CONDITIONS OF PARTICIPATION**

This chapter is not applied at the ECFS.

Students between 16 – 25 years of age, who are in forestry training, take part 2 times (see point 1.2.4).

This Competition is a team competition between schools of the EU and organised from EUROPEA ([www.europea.org](http://www.europea.org)) (The best team=school should come to the competition).

### **1.2.3 Participation in the competitions**

Participation in the European championship is within the discretion of each country. Participants must be in forestry training.

A team consists of 4 participants. Each participant must compete in theory and practice.

The rules confirmed by the international organizing committee shall be observed in the competitions. Each participating country may send a national delegation to the

competition, on the choice and training of which it makes its own decisions. The national committee is responsible for the observance of the regulations.

#### **1.2.4 Eligibility for start**

- Participants must be in forestry training (school, college), not apprenticeship without formal connection to the school.
- age level: 16 - 25 years
- The students can take part two times.

## **4.4. Chapter VI: JUDGING AND RESULT EVALUATION**

This chapter is not applied at the ECFS.

## 4.5. Chapter VII: THE SAFETY REGULATIONS

We complete these rules with:

- The contestants have to wear jackets if the head jury decides that the day before.
- Normal eye or sun glasses are not allowed as protection.
- The contestant is not allowed to use any additional marking instruments.
- The contestant has the right to concentrate (max. 1 min.) before each performance.
- The contestant has to take out an insurance policy in his native country. The national committees are responsible for sufficient health and accident insurance. Contestants start at their own risk.

**NEW:** Table 1: Penalty points for violation of general safety rules

→ Number 9: Injuries that require medical attention: 50 Pts.

## 4.6. Chapter VIII: PERFORMING THE DISCIPLINES

### 4.6.1. Tree felling

**Note:** In the German rules, the depth of the felling cut is wrong (10 – 12 cm), please refer to the English version (right: 7 – 12 cm). **WURDE KORRIGIERT!!**

We complete these rules with:

- The contestants have 90 seconds for simulator-felling
- Page 12, paragraph 5 is not applied in ECFS: “For instance, it is prohibited to mark the depth of the sink with a felt-tip on the bar, or to mark the width of the hinge, the height of the felling cut or of the top cut of the sink. It is also prohibited to mark the height of the sink with the chainsaw, or the width of the hinge with the claw (see figure 5).”  
ECFS: It is allowed to mark the height and the width of holding bridge with the chain saw (claw or running chain)!! It is not allowed to use a marker or colour!
- Safety and forbidden zones will be marked on the ground!
- Working area on the stem (mast): max. 30 cm above the ground or holding equipment!
- Measuring the holding bridge (hinge): The jury should cut the whole stem (f. e. with a smaller chain)
- The felling cut can be made as a swinging cut or as a cut for a tree which is hanging forward. In this case the holding bridge is to cut from outside the stem. It is NOT allowed to cut - after finishing the holding bridge (Hinge) - from inside to outside of the stem in one cut!
- Decision in Luxembourg: If the hinge (holding bridge) is completely cut through at one place, the contestant is awarded with 0 points for the felling event!
- For mast felling, the safety zone will be fixed for all students!

#### **4.6.2. Fitting another chain**

Note: In the IALC-rules, there is a fault about the tightening: Paragraph 2.3: “The nuts are then tightened with a dynamometric wrench at a torque of 2 kg (2 Nm)”. Correct is 20 Nm!!

##### **TIME:**

According to the IALC-rules, time is measured on a fully visible digital display in minutes and seconds. The measuring accuracy = 0,1 second.

ECFS:

- If it is too expensive to have this digital display it is also possible to use 2 manual watches for timekeeping!!

##### **CHAIN TENSION:**

IALC-rules:

“2.3. Preparation: The judge sets the chain so that there is no gap between the links and the bar.

2.7 Measurements – evaluations: Failure to carry out task correctly. If there is a gap between the chain and the bar, 50 penalty points are given. The judge may not touch the chain when checking the chain tension.”

**Explanation of the IALC from Mr. Max Fischer:** „between tie strap and bar there must not shine through any light! (Zwischen Kettenglied und Schiene darf kein Licht sein” (see the presentation on our homepage).

ECFS:

- Decision in Luxembourg: there can be a gap between tie strap (Verbindungsglieder) and the bar before and after this discipline. Penalty points are given, if the drive link (Treibglieder) is out of the bar!
- Before and after fitting a new chain there will be NO gap between drive links and bar!

#### **4.6.3. Bucking by combined cuts**

IALC-rules:

New Fig: 28: The judges have to see this failure on the stem or on the discs!

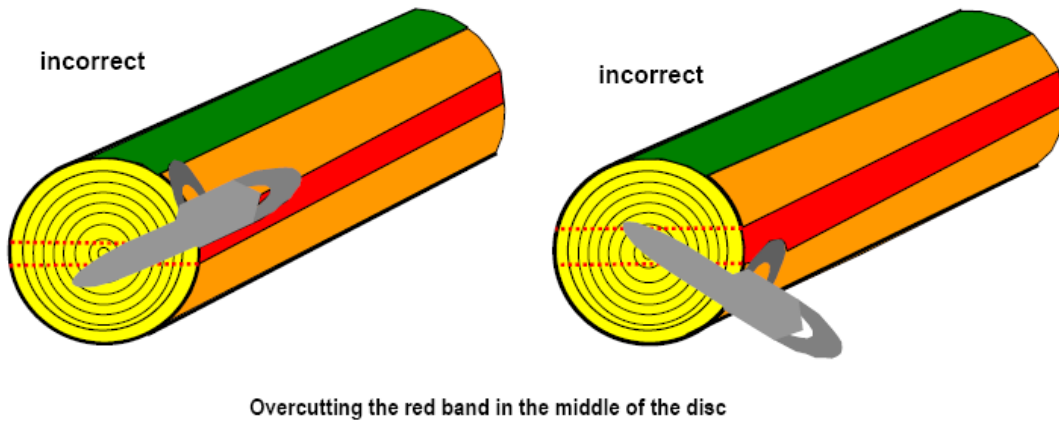
(Nach Auskunft des IALC Christian Grahn: Ein Überschneiden zählt nur mit der Spitze des Schwertes!)

Explanation from IALC-person in charge Christian Grahn: The mistake “overcutting” is only considered if you cut with the top of the bar. The contestant doesn’t get penalty if he cuts over the red line with the bend of the bar.

ECFS:

- Decision in Luxembourg: Overcutting the red band in the middle of the disc has to be seen on the wood – falling through is no mistake!

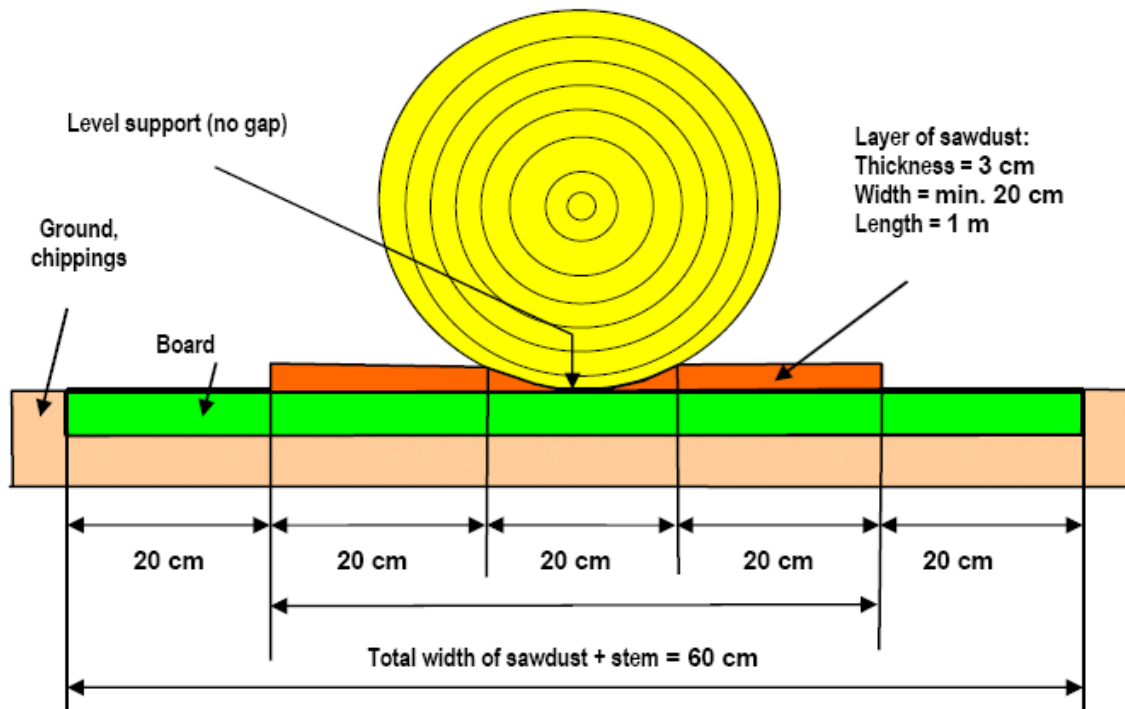
Fig. 28: Overcutting / undercutting the red band in the middle of the disc



#### 4.6.4. Precision bucking

NEW Fig. 32

Fig. 32: Laying the stem, positioning base board and dimensions of the layer of sawdust



*Copying rights with ialc*

IALC-rules:

**“Removal of sawdust from the plank:**

If the contestant deliberately removes the sawdust with his hand, foot or chainsaw he is awarded zero points for the entire discipline.”

ECFS:

- Removing the sawdust with the body of the chain saw: it is only allowed one movement forward and one movement backward.

IALC-rules:

**“Faulty chain or cutting apparatus:**

If the chain is jammed, slips off the bar or if the chain cover nut is lost, the contestant may refit the chain and complete the task. This, however, means that he is awarded zero points for the "Fitting another chain" discipline and receives no points for the time in the "Precision bucking" discipline.”

ECFS:

- The length of the prepared sawdust should be the same for all contestants – not exactly 1m like described in the IALC-rules!

#### **4.6.5. Limbing**

The organizing country decides if this event is arranged during the competition or after the other events.

- The position of the branches will be the same as at the World Championship 2008 in Germany (see “downloads” at <http://ecfs-2010.mysite.lu>).
- The stems should be secured in a way they do not move and be fixed on a base at a height of 60 cm.
- The branches can be round (30 mm in diameter) or square (30 mm in diameter, side with 21 or 22 mm). Min. length of the branches is 30 cm.
- The damage of wood > 35 cm: The judges have to observe a continuous damage!
- The highest point of the branch stumps is taken as the result for stumps, without taking into account the centre of the branch. Penalty points are given for branch stumps higher than 5 mm.
- Penalty is 20 points per branch stub (see figures 39 + 40 at the IALC-rules).

#### **4.6.6. Forestry course**

- First aid: only practical test for the team (no theoretical test). The organizer will tell what will be in the first aid box (homepage) and will show it, during the check of the chainsaws!
- The list of animals has been extended (look at <http://ecfs-2010.mysite.lu>)